

**TABLE 1: DMC 10XX SERIES CAMERA KIT OPTIONS**

| PART NO. | MODEL NO. | BRIEF DESCRIPTION  |
|----------|-----------|--|
| 5715     | DMC-1021  | SELECT CAMERA , MINI CAMERA (INTERNAL USE) (NTSC)              |
| 5717     | DMC-1025  | SELECT CAMERA , MINI CAMERA (INTERNAL USE) (PAL)               |
| 5719     | DMC-1031  | SELECT CAMERA , MINI CAMERA (INTERNAL USE) 720P / 30 FPS (AHD) |
| 5721     | DMC-1035  | SELECT CAMERA , MINI CAMERA (INTERNAL USE) 720P / 25 FPS (AHD) |

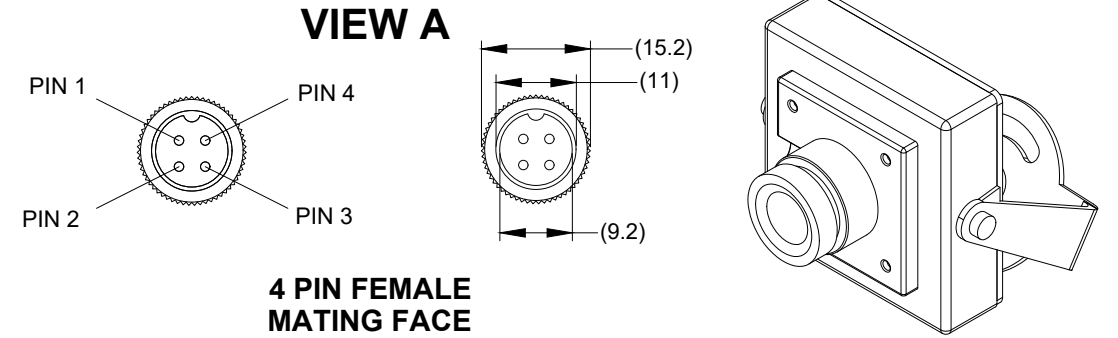
**TABLE 2: CAMERA KIT CONTENT**

| ITEM              | ①   | ②  | ③  | ④  | ⑤                              | ⑥  | ⑦                           |
|-------------------|---|--|--|--|--------------------------------|--|-----------------------------|
| PART NUMBER       | 5716  | 5718   | 5720   | 5722   | 4918                           | 5744   | 5307                        |
| MODEL NUMBER      | DMC-1021-C                                      | DMC-1025-C                                     | DMC-1031-C   | DMC-1035-C   | DMC-10XX-BKT                   | DMC-10XX-IG                                    | DMC-10XX-FIX                |
| BRIEF DESCRIPTION | SELECT CAMERA, MINI CAMERA (NTSC) - CAMERA ONLY | SELECT CAMERA, MINI CAMERA (PAL) - CAMERA ONLY | SELECT CAMERA, MINI CAMERA 720P / 30 FPS (AHD) - CAMERA ONLY | SELECT CAMERA, MINI CAMERA 720P / 25 FPS (AHD) - CAMERA ONLY | DMC-10XX SERIES CAMERA BRACKET | DMC-10XX SERIES INSTALLATION GUIDE (NOT SHOWN) | DMC-10XX SERIES FIXING PACK |
| DMC-1021          | QTY   | 1  | -  | -  | -                              | -  | -                           |
| DMC-1025          | QTY   | -  | 1  | -  | -                              | -  | -                           |
| DMC-1031          | QTY   | -  | -  | 1  | -                              | -  | -                           |
| DMC-1035          | QTY   | -  | -  | -  | 1                              | -  | -                           |

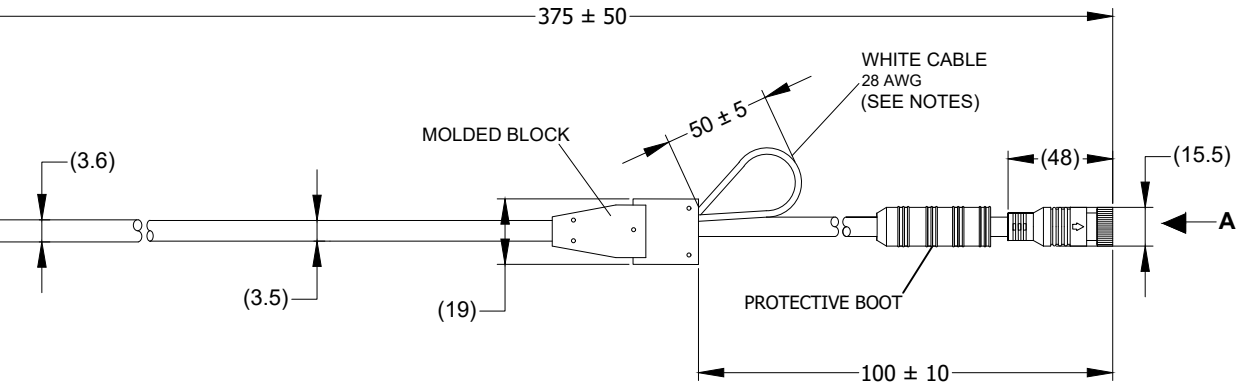
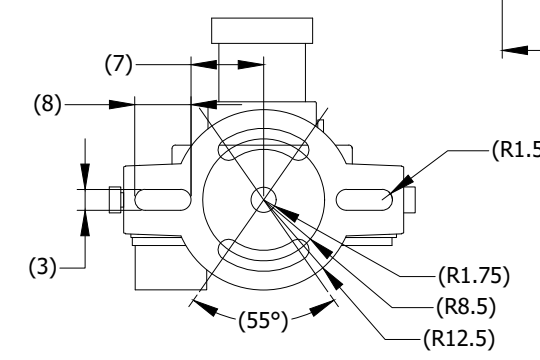
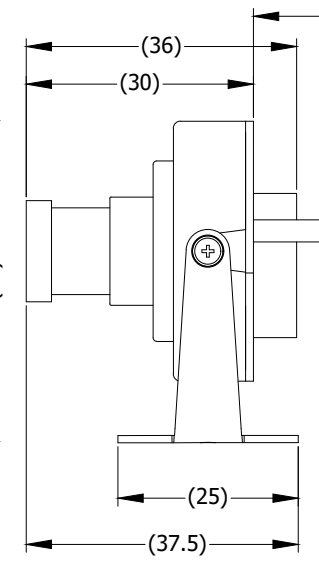
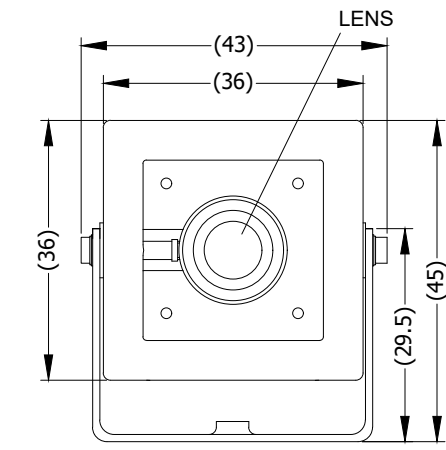
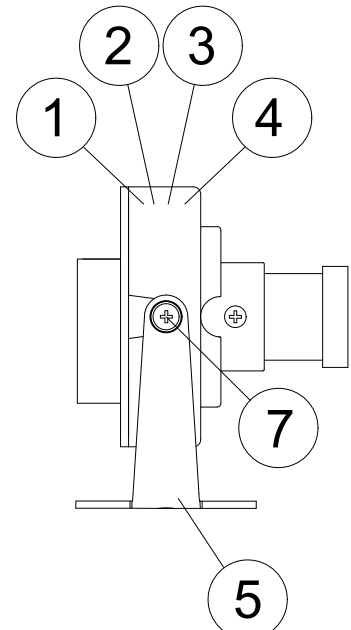
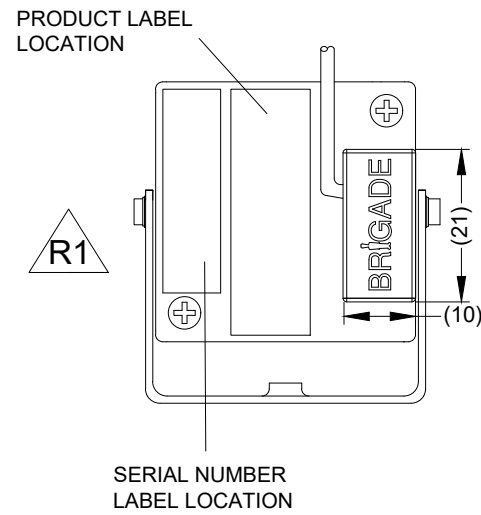
Revision Notes.

R1- Product and Serial number locations changed, in line with CR-A711.

APA: C.ZHANG    Drawn:S.Govender    Checked:J.STEWART    Approved:S.LAVER    Date: 25/11/19



| PIN # | WIRE COLOUR  | DESCRIPTION |
|-------|--------------|-------------|
| 1     | RED          | +12V        |
| 2     | BLACK/SHIELD | GND         |
| 3     | WHITE        | AUDIO       |
| 4     | YELLOW       | VIDEO       |



- NOTES:**
- CUT WHITE CABLE FOR MIRROR IMAGE AND INSULATE EXPOSED WIRE.
  - REFER TO PRODUCT SPECIFICATION FOR PRODUCT DETAILS.
  - REFER TO COMPONENT DRAWINGS FOR COMPONENT DETAILS.
  - CAMERA IS SUPPLIED WITH BRACKET ASSEMBLED.
  - FOR PACKAGING & LABELING DETAIL REFER TO LATEST REVISION OF THE MASTER BOM.
  - PROTECTIVE BOOT TO MAINTAIN IP RATING. SPECIFICATION CONTROLLED BY SUPPLIER.

**PROPRIETARY NOTICE**  
 THIS DESIGN AND TECHNICAL INFORMATION APPEARING ON THIS DRAWING IS THE PROPERTY OF BRIGADE ELECTRONICS, AND IS DISCLOSED IN CONFIDENCE. IT IS NOT TO BE COPIED, REPRODUCED, REVEALED TO OR EXPROPRIATED BY OTHERS, EITHER IN WHOLE OR IN PART WITHOUT THE EXPRESS WRITTEN CONSENT OF BRIGADE ELECTRONICS.



|                                  |                         |                                    |                      |                         |
|----------------------------------|-------------------------|------------------------------------|----------------------|-------------------------|
| Assembly PI Approval<br>C. ZHANG | Approved by<br>S. LAVER | Checked by<br>R. BATES             | Released<br>25/02/19 | Drawn by<br>S.Robertson |
| Angle of Projection<br>          | Units<br>mm             | Scale<br>N/A                       | Assembly Ref<br>-    | Status<br>RELEASED      |
| Part No<br>SEE TABLE 1           |                         | DMC-10XX SERIES<br>BE-003963-01-19 |                      |                         |